

# Rittal – The System.

Faster – better – everywhere.

## Digital Brochure

ENCLOSURES

POWER DISTRIBUTION

CLIMATE CONTROL

IT INFRASTRUCTURE

SOFTWARE & SERVICES

FRIEDHELM LOH GROUP

[www.rittal.ca](http://www.rittal.ca)



# Rittal – The System.

Faster – better – everywhere.



# System Accessories

## Base/Plinth

Flex-Block Base/Plinth System .....	424
TS Base/Plinth .....	426
Base/Plinth .....	433

## Base

Base .....	435
------------	-----

## Walls

Sidewalls .....	450
Partition Walls .....	453
Interconnect Kit .....	458

## Baying Systems

Baying .....	460
--------------	-----

## Doors/Locks

Door Models .....	467
Expansion Accessories for TS Modular Front Design .....	469
Viewing Windows/Operating Panels .....	473
Lock Systems .....	478
Hinges .....	492
Door, External/Internal .....	493

## Roof/Wall Mounting

Roof .....	499
Wall Mounting .....	503

## Interior Fittings

Mounting Plates .....	507
Rail Systems .....	514
Assembly Components .....	533
Component Shelves .....	540
System Lights .....	545
EMC .....	551
Interior Fittings for Areas at Risk of Earthquake .....	554
Grounding .....	555

## Cable Routing

Cable Entry .....	561
Flange Plates .....	564
Cable Gland .....	568
Cable Gland .....	569
Cable Management .....	572
Cable Routing 19" .....	582

## 19" Installation System

Pivoting Frame .....	587
Accessories for Data Rack .....	591
Profile Rails .....	592
Slide Rails .....	596
19" Fittings .....	598
Patch Panels .....	603
Splicing Boxes .....	604

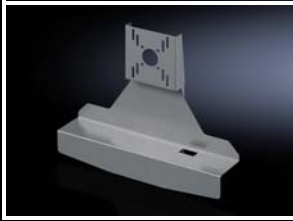
## Human/Machine Interface

Handles .....	605
External Mounting Accessories .....	607
Front Fittings .....	608
Keyboards, Supports and Drawers .....	610
Interfaces .....	617
Signal Pillars .....	619

## Technical Information

RittalXpress .....	622
CE/Grounding/HD/Model Numbers .....	623
Protection Categories .....	624
NEMA .....	625
Approvals/Equipment Grounding Conductor .....	627
Coating/Spray Finish .....	628





## TFT holder

Suitable for mounting TFTs with VESA 75/100 adaptation up to 21" on

- Attachment CP 40, 6501.070, see page 131
- Attachment CP 60 for support arm connection □ 120 x 65 mm, 6206.360, see page 139
- Vertical support arm via +100°/-60° tilting adapter, 6206.460, see page 139

### Material:

- Carbon steel

### Surface finish:

- Spray-finished

### Color:

- RAL 7024

Dimensions inches (mm)	Packs of	Model No.
15 x 19 x 4 (372 x 477 x 110.5)	1 pc(s).	<b>2383.030</b>

### Technical details:

Available on the Internet

## Keyboard, pull-out

### with integral trackball

Super-slimline keyboard with cursor keys and trackball. The handle also acts as a hand rest. At a 10° angle for good ergonomics when typing.

For installation in

- All sufficiently large surfaces (e.g. door, side panel)
- Front panels
- Directly in Comfort Panels of appropriate size, can be selected using the configurator on the Rittal web pages

### Technical specifications:

Keyboard:

- 84 short-stroke keys, IBM-AT compatible (MF2), incl. cursor keys
- With integral 16 mm trackball
- Interface: 2 x USB
- Operating temperature: +41°F...+122°F
- Storage temperature: +14°F...+140°F
- Relative humidity: max. 95 % (no condensation)

Keyboard layout	Packs of	Model No.
German	1 pc(s).	<b>6002.130</b>

### Material:

- Carbon steel

### Surface finish:

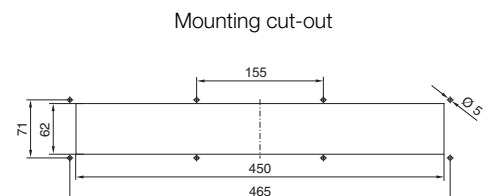
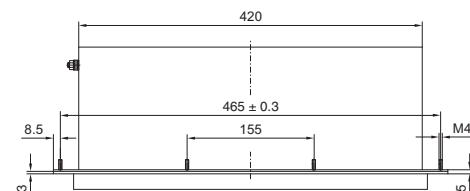
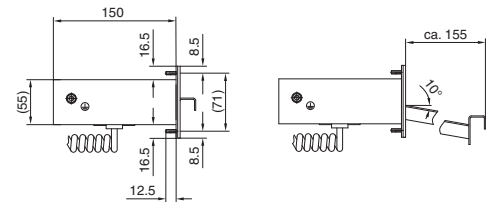
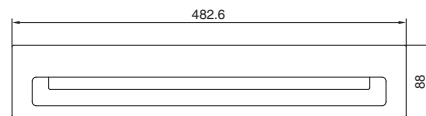
- Front panel: Powder-coated

### Color:

- RAL 7035

### Protection category IP to IEC 60 529:

- IP 65 (at front, closed)



## Built-in keyboard 19" 4 U

### with integral touchpad

The integral touchpad means there is no need to install a mouse in the correct protection category, and cabling is also reduced. The short-stroke keys are easy to locate thanks to raised edges, are operated with a light touch and give good, tactile feedback.

#### Advantages:

- The separate number pad enables the parameters to be entered quickly
- Sealed, wipeable surface finish
- High level of mechanical and chemical resistance as per DIN 42 115.

#### Technical specifications:

- Number of keys: 105
- Dimensions of front panel: 19" x 4 U (482.6 x 177.0 mm)
- Installation depth: 23 mm
- 12 rear threaded bolts M5 x 20
- Actuator travel/actuating force: 0.3 mm/2.6 N
- Service life: 3 million switching cycles
- Operating temperature: -40°F...194°F
- Resolution of touchpad, capacitive: 40 pixels/mm
- Interfaces: USB

#### Material:

- Front panel: Aluminum

#### Protection category IP to IEC 60 529:

- IP 65 (at front)

#### Supply includes:

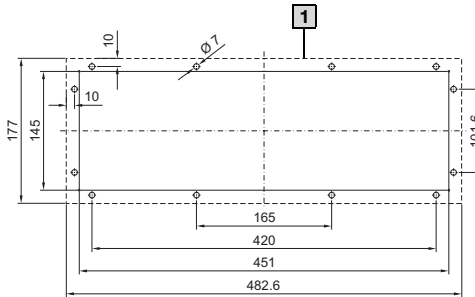
- USB connection cable, length 1800 mm
- Seal
- Drilling template
- Assembly components for surfaces

Keyboard layout	Packs of	Model No.
German	1 pc(s).	6446.030

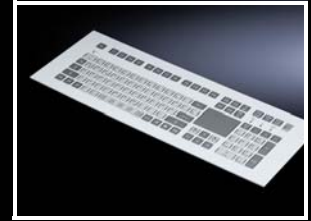


#### Also required:

- Mounting kit 6053.800 (for installation in Comfort Panel), see page 609



1 Contact surface



## Fold-out tray

### for keyboard and mouse

For installation in

- 600 and 800 mm wide doors
- 19" swing frames and enclosures

Standard double-bit lock insert may be exchanged for 27 mm lock inserts, type A, see page 488 and lock cylinder SZ 2571.000, see page 489

#### Material:

- Flap: Carbon steel
- Side parts: Cast aluminum
- Tray: Extruded aluminum section

#### Surface finish:

- Flap, side parts: Textured paint
- Tray: Natural anodized

#### Color:

- Flap, side parts: RAL 7035

#### Protection category:

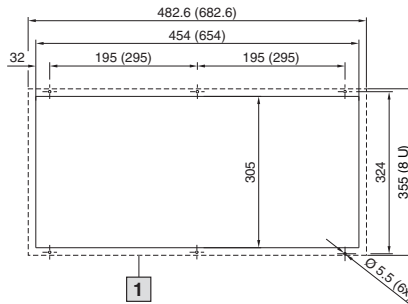
- IP 55 to EN 60 529



#### Accessories:

- Support for mouse pad, pull-out, see page 612

#### Mounting cut-out



1 Contact surface



For door width inches (mm)	External dimensions H x W x D inches (mm)	Installation depth inches (mm)	Max. keyboard size H x W x D inches (mm)	Model No.
24 (600)	14 x 19 x 5 (355/8 U x 482.6 x 126)	4 (93)	2 x 16 x 10 (50 x 405 x 250) 2 x 16 x 8 (50 x 405 x 195) <sup>1)</sup>	2379.600
32 (800)	14 x 27 x 5 (355/8 U x 682.6 x 126)	4 (93)	2 x 24 x 10 (50 x 605 x 250) 2 x 24 x 8 (50 x 605 x 195) <sup>1)</sup> 2 x 19 x 10 (50 x 475 <sup>1)</sup> x 250)	2379.800

<sup>1)</sup> Max. keyboard size with holder for mouse



# Keyboards, Supports and Drawers



## Support for mouse pad, pull-out

### with mouse holder

Screw-fastened to the fold-out tray 2379.600/2379.800, see page 611.

To fit all standard mouse pads up to 250 x 205 mm.

### Supply includes:

- Assembly components

Packs of	Model No.
1 set(s)	2379.900



## Support

### for keyboards

up to max. 473 x 210 mm.

Prepared for

- Cable gland
- Support for mouse pad, swivel 2383.020

### Material:

- Side parts: Carbon steel
- Front and rear: Extruded aluminum section

### Surface finish:

- Side parts: Textured paint
- Front and rear: Natural anodized

### Color:

- Side parts: RAL 7024

### Supply includes:

- 2 clamping levers, end stoppers, cover plate, cable entry grommet and Hook and loop strap

Packs of	Model No.
1 set(s)	2383.000



### Also required:

- For installation on surfaces using housing surface connector, see page 607



### Accessories:

- Support for mouse pad, swivel, see page 616



## Utility bars, swivel

To support standard keyboards during programming and servicing work.

Rest requires mounting clearance of at least 300 mm to allow it to pivot freely.

Sufficient depth for keyboards up to max. 210 mm.

For mounting below

- Comfort Panel<sup>1)</sup>
- Sufficiently large surfaces, e.g.:
  - Worktops IW
  - Command Panel with Handle Strips

on

- Vertical surfaces (doors/side panels)

Min. front panel width

<sup>1)</sup> 385 mm

After use, the utility bars fit securely and neatly under the mounting surface, thus giving the operator more space to move around.

Packs of	Model No.
1 set(s)	6514.200

### Material:

- Carbon steel

### Surface finish:

- Zinc-plated

### Supply includes:

- Assembly components



## Drawer 19"/2 U for keyboard and mouse

For installation in

- All sufficiently large surfaces (e.g. door, side panel)
- 19" hole profile
- Front panels
- Directly in Comfort Panels of appropriate size, can be selected using the configurator on the Rittal web pages

Suitable for

- Accommodating keyboards up to max. 32 x 390 x 139 mm
- Support for conventional mouse or trackball

### Version:

- Drawer: With stay
- Front panel: With security lock (lock no. 12321) and handle strip

Width inches (mm)	U	Depth inches (mm)	Model No.
19" (482.6)	2	6 (150)	<b>6002.000</b>

### Material:

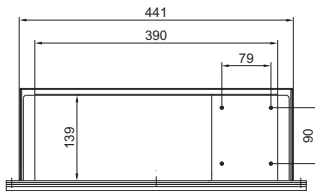
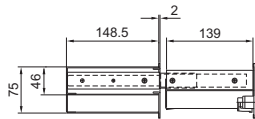
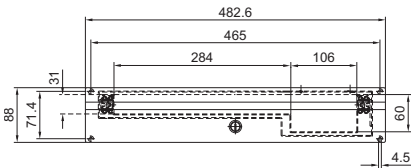
- Drawer housing: Carbon steel
- Drawer and front panel: Aluminum

### Surface finish:

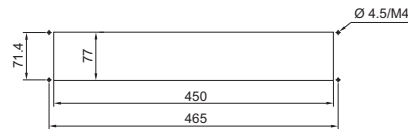
- Drawer housing: Zinc-plated
- Drawer and front panel: Natural anodized

### Supply includes:

- Assembly components for installation in Comfort Panel command panel



Mounting cut-out  
(for installation in surfaces)



# Keyboards, Supports and Drawers



## Drawer for keyboard and mouse

### with mouse pad support

For installation in

- All sufficiently large surfaces (e.g. door, side panel)
- Front panels

Suitable for accommodating

- Keyboards up to max. 42 x 460 x 170 mm
- Standard mouse and mouse pad

### Version:

- Drawer and housing: With side pull-out mouse pad support and tray
- Front panel: With 3 mm double-bit lock insert, folds out as handrest

Width inches (mm)	U	Depth inches (mm)	Model No.
19" (482.6)	3.5	10 (261)	<b>6003.000</b>

### Material:

- Drawer and enclosure: Carbon steel
- Front panel: Aluminum

### Surface finish:

- Drawer and enclosure: Textured paint
- Front panel: Natural anodized

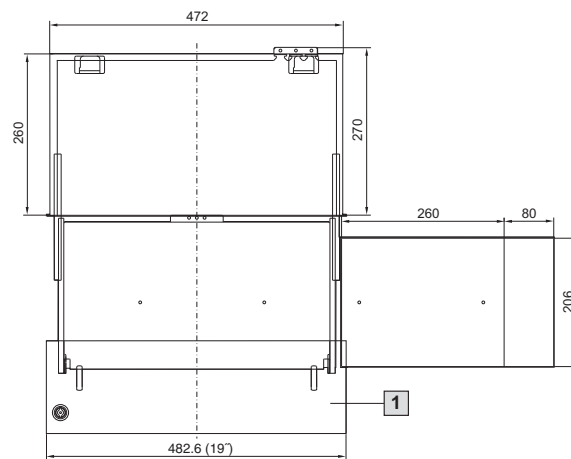
### Supply includes:

- Assembly components

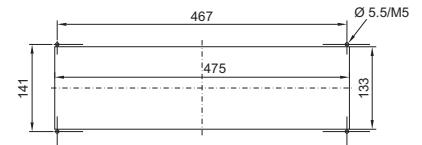


### Accessories:

- Standard double-bit lock insert may be exchanged for 27 mm lock insert, type A, see page 488



Mounting cut-out for installation in surfaces



1 Front trim panel



## Keyboard drawer 1 U

### for 19" (482.6 mm) mounting level

The space-saving keyboard drawer is screw-fastened to the front and rear 19" (482.6 mm) mounting level. The installation clearance is infinitely variable in the range between 460 – 800 mm.

It is fully extendible and lockable, with strain relief and hinged cable support.

The drawer is suitable for accommodating 19" (482.6 mm) keyboards.

### Interior dimensions:

- H x W x D approx. 40 x 420 x 220 mm

### Material:

- Carbon steel

### Color:

- RAL 7035

### Supply includes:

- Assembly components, without keyboard

### Note:

- Monitor/keyboard unit, 1 U, see page 377

Distance between levels inches (mm)	Model No.
18 – 32 (460 – 800)	<b>7281.200</b>



## Keyboard drawer 2 U

### for a 19" (482.6 mm) mounting level

For keyboards up to 430 mm wide and 250 mm deep when front panel is folded up.

#### Material:

- Carbon steel with aluminum front

#### Surface finish:

- Spray-finished

#### Color:

- RAL 7035

#### Supply includes:

- Lockable drawer with handles
- Folding front
- Pull-out mouse pad
- Mouse support
- Practical cable entry
- And strain relief

Height	Packs of	Model No.
2 U	1 pc(s).	<b>7281.035</b>

Installation depth: 390 mm



## Support for mouse pad

### for command panels and surfaces

The angle of the rest can be individually adjusted. Two mounting holes are required for mounting on the housing.

#### Material:

- Carbon steel

#### Surface finish:

- Zinc-plated

#### Supply includes:

- Assembly components

Weight lb (kg)	Packs of	Model No.
2 (1.0)	1 pc(s).	<b>2381.000</b>



#### Accessories:

- Support for mouse, see page 616



# Keyboards, Supports and Drawers



## Support for mouse pad, swivel

Mounted on the left/right below the keyboard rest. Latches in place automatically, both when retracted and extended. With mounting holes for mouse holder 2382.000.

With cut-outs for cable entry and holes for quick mounting with cable ties 2597.000.

### Material:

- Carbon steel

### Surface finish:

- Zinc-plated

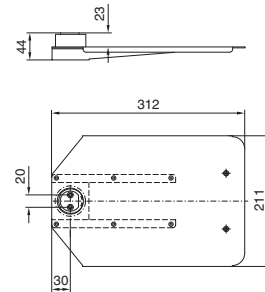
### Supply includes:

- Assembly components and mouse pad, stuck on with adhesive

Packs of	Model No.
1 pc(s).	<b>2383.020</b>

### + Accessories:

- Support for mouse, see page 616
- Cable tie, see page 576



## Mouse holder

To fit mouse pad rest, holds a standard mouse securely.

### Material:

- Carbon steel

### Surface finish:

- Zinc-plated

### Supply includes:

- Assembly components

Weight lb (kg)	Packs of	Model No.
0.7 (0.3)	1 pc(s).	<b>2382.000</b>

### ! Also required:

- Support for mouse pad, see page 615 or
- Support for mouse pad, swivel, see page 616